

ARCIS

Stair treads with minimal appearance, maximum durability and nearly unlimited aesthetic options

ARCIS stair treads are sleek, functional and highly durable to withstand years of foot traffic. They deliver a minimalist appearance with maximum durability and can be adapted to fit in most common stair and tread platform systems.

You can select from a wide variety of slip-resistant, architectural finishes to meet your design needs and ensure the stair treads complement any décor.

Aerospace-grade stainless steel prestressing eliminates nearly all cracking and the possibility of corrosion, creating a stair tread ideal for high-volume commercial, institutional or residential applications.

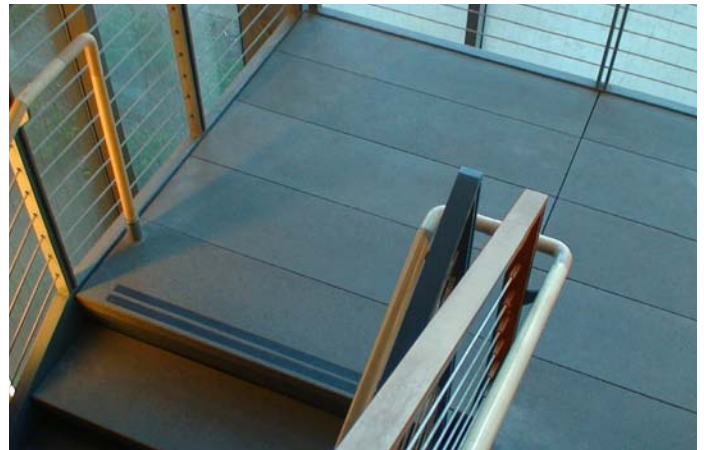
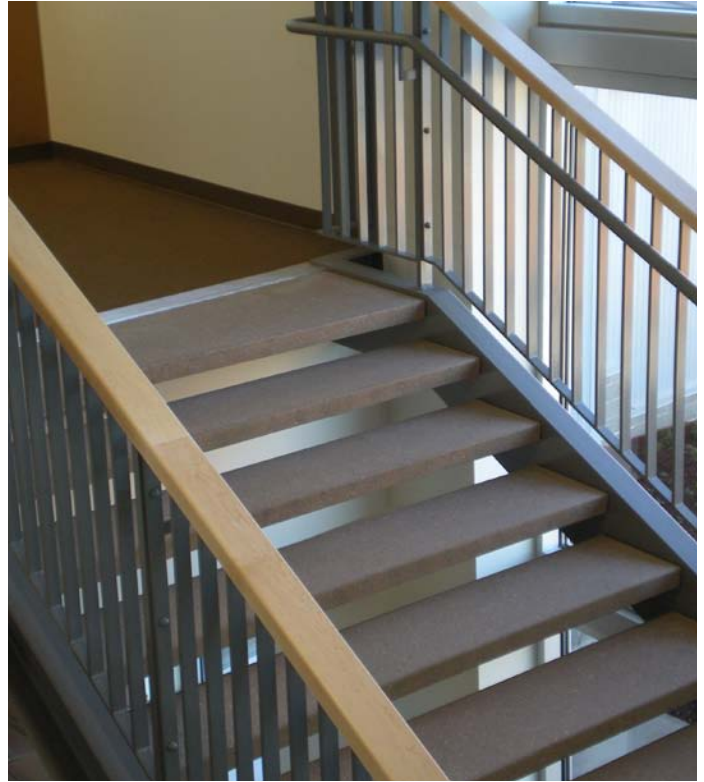
In addition, special mix designs are available to withstand the harshest environments including exposure to salts, freeze-thaw cycles, high heat and heavy weights.

ARCIS stair treads can be made in different thicknesses (starting at .75 in/19mm), widths and lengths. The panels can be cut and core drilled using conventional equipment for easy accessory and rail attachment. They can be designed to span between stringers or supported on steel pans.

Our 2" (51mm) thick treads can span up to 6' (1.83m). Treads as thin as 1" (25mm) can be used in stair pans without cracking, curling or warping.



STAIR TREADS



A wide array of color palettes and textures are available to meet any interior decor need or look.

ARCIS

Visit arcispanel.com or call 888-GO-ALTUS for technical data, specifications, and a list of licensed precasters.

Information current as of December 2017

altusgroup®

Precast innovation powered by collaboration